



**2020 Product Catalog**

**CORE**<sup>®</sup>  
RIFLE SYSTEMS



# To our Customers

CORE Rifle Systems from the very beginning, set out to establish our CORE Values. These are not descriptions of the work we do, but the strategies we employ to accomplish our mission. These are values that underlie our work. How to manufacture quality parts that interact with each other flawlessly and what strategies we employ to do so.

Some of the most important to us are:

**Dependability** - Our firearms are built to work as hard as you do.

**Reliability** - Whether it's shooting on the range or used in the line of duty, performance matters with CORE Rifle Systems.

**Commitment to Excellence** - Every part manufactured by CORE must pass a precise inspection before it is used on the building of our firearms.

**Consistency** - Every barrel we manufacture is tested for stringent consistency before it is deemed acceptable in the building of our firearms.

**Innovation** - Our engineers work tirelessly on new ideas to implement into our builds both current and for the future.

**Creativity** - By listening to our CORE "users", we take all these ideas put forth to us and test them rigorously to warrant them a spot in our line up.

**Respect** - With the ever changing industry, we know that our consumers and dealers have choices. Our commitment to accuracy, quality and reliability does not go unnoticed. It has earned us respect among other industry leaders.

These CORE Values are the basic elements of how we go about our work every day. By you putting your trust in our company, we have absolutely met our number one goal and that is your "Loyalty" to our brand!

*Thank you,  
CORE Rifle Systems Team*

# The CORE Rifle Systems Warranty

The Product you have just purchased has the simplest, most plainly written warranty you will ever read. There is no fine print. This CORE Rifle Systems product has been manufactured and assembled with painstaking care and precision by proud U.S. Veterans and Craftsman, trained by the best there is. If anything is not as it should be, accuracy included, if anything malfunctions, simply contact one of our professionals and we will work to make it right. If you're the 5th owner and the rifle has seen 40k+ rounds, it simply...doesn't...matter. We stand behind our rifles and we take care of our customers. We will cover anything other than normal wear & tear, abuse or neglect. That is our solemn promise and your assurance.



# Mil-Spec and Mil-Standard Explained

In the firearms industry you hear the term “Mil-Spec” thrown around quite a lot. Let’s talk for a minute about exactly what the term means. A specification is a standard to which the end user, in this case the US Military, wishes something to be made and held to. The primary reason for this is consistency and interchangeability. Within that realm, and for what the military standard covers, there still remains a vast span of places and areas to “tighten up” if you will.

Let’s take a look at a few of those places.

The barrel arguably needs to be a very consistent and well-tuned part of the rifle. The Military Standard for a 14.5” M4 and 20” rifle barrels, requires consistency of .0010 from front to rear. Here at CORE, nothing less than .0003 will make it through our inspection process which is twice the military standard specification. Indeed, that inspection process itself is 10x tighter than what the military requires, which is a 10% inspection rate. We inspect and test fire 100% of our barrels.

Beyond the barrel, in getting to the action, simply keeping within the guidelines of Mil-Spec conformity is not enough for us. Going above and beyond, both in fitment, finish quality and internal parts, we do everything possible to take the AR-15 platform to the next level. This shows through in the accuracy, consistency and durability of our rifles. But don’t take our word for it. Find your nearest CORE Rifle Systems Authorized Dealer and see if you don’t agree.

## CATALOG GUIDE

- **CORE SHOOTERS & WHAT’S NEW FOR 2020** .....02-03
- **CORE C9 9MM CARBINE AND PISTOL**.....04-05
- **CORE ROSCOE R1 & RSW1 PISTOLS**.....06-07
- **CORE ROSCOE 42 & RSW2 PISTOLS**.....08-09
- **CORE SCOUT & M-LOK SCOUT**.....10-11
- **CORE 8.5” TRUCK GUN**.....12-13
- **CORE TAC IV & TAC IV LIGHTWEIGHT**.....14-15
- **CORE TAC 6.5 GRENDL**.....16-17
- **CORE hardcore SYSTEM X RIFLES**.....18-21
- **CORE .308 RIFLES**.....22-23
- **CORE TAC II & TAC II LIGHTWEIGHT .308**.....24-25
- **CORE LAW ENFORCEMENT & GOVERNMENT**.....26-27
- **CORE COMPLETE UPPERS**.....28-31
- **CORE BARRELS**.....32-33
- **CORE RECEIVERS**.....34-35
- **CORE PISTON KITS & BCGS**.....36-37
- **CORE PARTS AND COMPONENTS**.....38-41
- **CORE APPAREL, GEAR AND MAINTENANCE**.....42-43





## Team Shooter

# Cheyenne Dalton

Cheyenne lives on a family farm in Missouri surrounded by fields and woods. She started shooting with her father at a young age, and soon after, the competitive shooting bug bit her. She started shooting rimfire challenge and USPSA in 2014 and then 3-Gun in mid-2015. She enjoys the outdoors and loves to go fishing and hunting with her family. Cheyenne is home schooled and enjoys playing Bluegrass music with her band, "That Dalton Gang". Cheyenne plays violin, mandolin, guitar, and upright bass. She started playing the violin when she was 5 and from there, it has blossomed into quite a career.



## Team Shooter

# Jeremy Young

A hardworking, dedicated and trustworthy family man best describes Jeremy Young as a person. Jeremy is an eleven year Marine Veteran and was a designated Marksman Instructor and Primary Marksman Instructor. Growing up in the mountains of West Virginia, Jeremy has always had a passion for guns. Jeremy has been shooting competition since 2003. He is a Senior Federal Agent for the United States Government where he is a Designated Marksman and a firearms instructor.

Competition started for him back in the Marine Corps. Following his career in the Marine Corps and he continued to pursue local competitive shoots beginning with shooting steel challenge. Today Jeremy shoots USPSA and 3 Gun. He has progressed from local shooting club matches to competing in local, regional and major 3-Gun matches around the country.



## Team Shooter

# Maximus White

Maximus has been practicing gun safety his entire life and was raised hunting, fishing, trapping, and shooting. At age 4, he started shooting .22 rifles. At age 5 he added .22 pistols and a .410 shotgun, and by age 7 he was shooting his very first AR-15 rifle.

Maximus most recent accomplishments are 3x Steel Challenge Grandmaster, Steel Target Paint South Carolina State Championship 1st place in Preteen LTD, Preteen RFPI, Preteen PCCO, Junior LTD. 2018 Extreme Powersports Georgia Steel Challenge State Championship (Tier II): 1st Place Overall Preteen, Preteen LTD, Preteen RFRI, Preteen PCCO and Junior LTD.



See complete information and recent results for all CORE Team Shooters at [www.core15rifles.com/](http://www.core15rifles.com/)



# What's New for 2020

## CORE15<sup>®</sup> M-LOK SCOUT

***"The legendary CORE line of rifles  
has a new sibling to make room for!"***

The CORE Rifle Systems development team has been busy putting together an affordable rifle, with the current market trends and influence of the U.S Army to convert from KeyMod to M-LOK.

Designed specifically as an entry level tactical rifle, all components are of the highest quality materials made in the United States of America, crafted and engineered by U.S. Veterans.

This rifle model has a free floating 15" M-LOK black anodized rail with laser engraved T-Marking. Equipped with a nitride coated BCG and CORE V.2 charging handle. This rifle stays true to mil-spec with a military style pistol grip and stock, allowing new owners to customize this rifle to their needs.



## CORE15<sup>®</sup> C9 9mm Rifle

Core Rifle Systems is proud to introduce our new line of AR 9mm pistols and carbines!

The new C9 is a ground up, original design. This is not a hybrid or modified AR. This all billet 7075 t6 Aluminum, all ambidextrous 9mm platform is designed around the Glock magazine system. Designed specifically for Team Core's professional shooters, this sleek little package delivers superior performance.

All components are of the highest quality U.S. materials, crafted and engineered by U.S. Veterans. The bolt carrier is a non-rotating blow back operation providing excellent function in its simplicity, made of the highest grade 416R stainless steel. The last round hold open functions flawlessly, while the unique ejection port provides trouble free cycling. The pistol model has the legendary SB Tactical PDW brace, while the carbine has the awesome Magpul CTR stock.

They are both equipped with a Samson SX Series M-LOK rail system, while the barrel is completed by our award-winning Core muzzle brake.



SALES, SERVICE, PARTS AND TECHNICAL ASSISTANCE CALL 352-401-9070 OR VISIT [WWW.CORERIFLESYSTEMS.COM](http://WWW.CORERIFLESYSTEMS.COM) TODAY

CORE15<sup>®</sup> and CORE30<sup>®</sup> are registered trademarks of CORE Rifle Systems, A Division of Good Time Outdoors, Inc.

# CORE15® C9 Pistol & C9 Rifle Standard Features

LOWER RECEIVER	CORE15® Billet Lower Receiver CNC machined from solid 7075-T6 aluminum alloy integral trigger guard, beveled magwell for improved reloading speed, machined chevrons in front of magazine well, bullet pictogram safety markings. Black cerakoted finish.
UPPER RECEIVER	CORE15® Billet Upper Receiver, CNC machined from solid 7075-T6 aluminum alloy, (1913 picatinny scalloped rail flat top) w/dry lube internal finish and laser engraved T-markings.
BOLT CARRIER	CORE15® 416SS Bolt Carrier that features an innovative AR style ejector and extractor.
GAS TUBE	304 Grade Stainless Steel
CHARGING HANDLE	CORE15® Ambi Charging Handle
TRIGGER GUARD	CORE15® Oversized Trigger Guard

## CORE15® C9 PISTOL

Chambered in 9mm

**MSRP: \$1199.99**

SKU: 20090

WEIGHT	6 lbs. 7.5 oz. (2.92 kg) Unloaded
IMPINGEMENT	CORE15® Direct Gas Impingement Gas System
BARREL	CORE15® 7.5" 1:10 Twist 4150 CMV with Black Nitride Finish
BUFFER TUBE/STOCK	SBPDW Tactical Stabilizing Brace
RAIL SYSTEM	Samson M-Lok SX Series 7" Rail
MUZZLE BRAKE	CORE15® Muzzle Brake
SIGHTS	Sights Optional
GRIP	Ergo Black Suregrip
MAGAZINE	Glock

## CORE15® HARDCORE C9 14.5" RIFLE

Chambered in 9mm

**MSRP: \$899.99**

SKU: 20091

WEIGHT	6 lbs. 13 oz. (3.09 kg) Unloaded
IMPINGEMENT	CORE15® Direct Gas Impingement Gas System
BARREL	CORE15® 14.5" 1:10 Twist 4150 CMV with Black Nitride Finish
BUFFER TUBE/STOCK	Magpul CTR Stock with Mil-Spec Buffer Tube
RAIL SYSTEM	Samson M-Lok SX Series 12.5" Rail
MUZZLE BRAKE	CORE15® Muzzle Brake Pinned and Welded
SIGHTS	Sights Optional
GRIP	Hogue Overmolded Grip
MAGAZINE	Glock

INCLUDES AS STANDARD:

Welcome Kit - Owner's Manual, CORE15® Lifetime Warranty Registration, Stickers, Dog Tags





mm NATO



CORE15<sup>®</sup> C9 PISTOL



CORE15<sup>®</sup> C9 14.5\"/>



SALES, SERVICE, PARTS AND TECHNICAL ASSISTANCE CALL 352-401-9070 OR VISIT [WWW.CORERIFLESYSTEMS.COM](http://WWW.CORERIFLESYSTEMS.COM) TODAY  
CORE15<sup>®</sup> and CORE30<sup>®</sup> are registered trademarks of CORE Rifle Systems, A Division of Good Time Outdoors, Inc.

# CORE15® Roscoe Standard Features

LOWER RECEIVER	CORE15® Mil-Spec Forged 7075-T6 Lower Receiver, type III Class II hard-coat anodized finish, beveled magwell for improved reloading speed, machined chevrons in front of magazine well, bullet pictogram safety markings
UPPER RECEIVER	CORE15® Mil-Spec Forged 7075-T6 M-4 Upper Receiver, type III Class II hard-coat anodized finish, M4 feed ramps, (1913 picatinny rail flat top) w/dry lube internal finish and laser engraved T-markings
BOLT CARRIER	CORE15® Mil-Spec carpenter 158 steel Bolt, M16 chrome lined 8620 steel carrier, Mil-spec staked gas key, tool steel extractor, shot peened
GAS TUBE	304 Grade Stainless Steel
GAS BLOCK	CORE15® Low Profile Gas Block
CHARGING HANDLE	CORE15® HARDCORE V.2 Billet
FLASH HIDER	Midwest Industries Flash Hider
GRIP	Magpul® MOE Grip
TRIGGER GUARD	CORE15® Oversized Trigger Guard
MAGAZINE	Magpul® PMAG® 30 RD

*“The Constitution shall never be construed to prevent the people of the United States who are peaceable citizens from keeping their own arms.”*

- Samuel Adams

## CORE15® Roscoe R1 Pistol .223/5.56x45mm NATO

MSRP: \$**65**9.99

SKU: 12126

WEIGHT	5.6 lbs. (2.54 kg) Unloaded
IMPINGEMENT	CORE15® Direct Gas Impingement Gas System
BARREL	CORE15® 10.5" Pistol Length Gas System 1:7 Twist, 4150 CRMOV Black Nitride Finish
RAIL SYSTEM	CORE15® Keymod 9.5" Rail
BUFFER TUBE	Sig Stabilizing Brace Buffer Tube

## CORE15® Roscoe RSW1 Pistol .223/5.56x45mm NATO

MSRP: \$**64**9.99

SKU: 17795

WEIGHT	5.6 lbs. (2.54 kg) Unloaded
IMPINGEMENT	CORE15® Direct Gas Impingement Gas System
BARREL	CORE15® 10.5" Pistol Length Gas System 1:7 Twist, 4150 CRMOV Black Nitride Finish
RAIL SYSTEM	CORE15® Keymod 9.5" Rail
BUFFER TUBE	KAK Industries Pistol Buffer Tube and Shockwave Blade

### INCLUDES AS STANDARD:

Welcome Kit - Owner's Manual, CORE15® Lifetime Warranty Registration, Stickers, Dog Tags



mm MATO

CORE15<sup>®</sup> *Roscoe* R1 Pistol



CORE15<sup>®</sup> *Roscoe* RSW1 Pistol



SALES, SERVICE, PARTS AND TECHNICAL ASSISTANCE CALL 352-401-9070 OR VISIT [WWW.CORERIFLESYSTEMS.COM](http://WWW.CORERIFLESYSTEMS.COM) TODAY

CORE15<sup>®</sup> and CORE30<sup>®</sup> are registered trademarks of CORE Rifle Systems, A Division of Good Time Outdoors, Inc.

# CORE15® Roscoe Standard Features

LOWER RECEIVER	CORE15® Mil-spec forged 7075-T6 lower receiver, type III class II hard-coat anodized finish, beveled magwell for improved reloading speed, machined chevrons in front of magazine well, bullet pictogram safety markings
UPPER RECEIVER	CORE15® Mil-spec forged 7075-T6 M-4 upper receiver, type III Class II hard-coat anodized finish, M4 feed ramps, (1913 Picatinny rail flat top) w/dry lube internal finish and laser engraved T-markings
BOLT CARRIER	CORE15® Mil-spec carpenter 158 steel bolt, M16 chrome lined 8620 Steel Carrier, mil-spec staked gas key, tool steel extractor, shot peened
GAS TUBE	304 Grade Stainless Steel
GAS BLOCK	CORE15® Low Profile Gas Block
CHARGING HANDLE	CORE15® HARDCORE V.2 Billet
FLASH HIDER	Midwest Industries Flash Hider
GRIP	Magpul® MOE Grip
TRIGGER GUARD	CORE15® Oversized Trigger Guard
MAGAZINE	Magpul® PMAG® 30 RD

*“The Constitution shall never be construed to prevent the people of the United States who are peaceable citizens from keeping their own arms.”*

*- Samuel Adams*

## CORE15® **300BO** Roscoe R2 Pistol

**300 AAC Blackout (7.62X35mm)**

MSRP: \$**75**9.99

SKU: 12249

WEIGHT	5.6 lbs. (2.54 kg) Unloaded
IMPINGEMENT	CORE15® Direct Gas Impingement Gas System
BARREL	CORE15® 10.5" Pistol Length Gas System 1:7 Twist, 4150 CRMOV Black Nitride Finish
RAIL SYSTEM	CORE15® Keymod 9.5" Rail
BUFFER TUBE	Sig Stabilizing Brace Buffer Tube

## CORE15® **300BO** Roscoe RSW2 Pistol

**300 AAC Blackout (7.62X35mm)**

MSRP: \$**74**9.99

SKU: 17794

WEIGHT	5.6 lbs. (2.54 kg) Unloaded
IMPINGEMENT	CORE15® Direct Gas Impingement Gas System
BARREL	CORE15® 10.5" Pistol Length Gas System 1:7 Twist, 4150 CRMOV Black Nitride Finish
RAIL SYSTEM	CORE15® Keymod 9.5" Rail
BUFFER TUBE	KAK Industries Pistol Buffer Tube and Shockwave Blade

INCLUDES AS STANDARD:

Welcome Kit - Owner's Manual, CORE15® Lifetime Warranty Registration, Stickers, Dog Tags



CORE15<sup>®</sup> *Roscoe* **300B0 R2 Pistol**



CORE15<sup>®</sup> *Roscoe* **300B0 RSW2 Pistol**



SALES, SERVICE, PARTS AND TECHNICAL ASSISTANCE CALL 352-401-9070 OR VISIT [WWW.CORERIFLESYSTEMS.COM](http://WWW.CORERIFLESYSTEMS.COM) TODAY  
CORE15<sup>®</sup> and CORE30<sup>®</sup> are registered trademarks of CORE Rifle Systems, A Division of Good Time Outdoors, Inc.

# CORE15® Scout & M-LOK Scout Standard Features

LOWER RECEIVER	CORE15® Mil-spec forged 7075-T6 lower receiver, type III class II hard-coat anodized finish, beveled magwell for improved reloading speed, machined chevrons in front of magazine well, bullet pictogram safety markings
UPPER RECEIVER	CORE15® Mil-spec forged 7075-T6 M-4 upper receiver, type III class II hard-coat anodized finish, M4 feed ramps, (1913 picatinny rail flat top) with dry lube internal finish and laser engraved T-markings
BOLT CARRIER	CORE15® Mil-spec carpenter 158 steel bolt, M16 chrome lined 8620 steel carrier, mil-spec staked gas key, tool steel extractor, shot peened
BUFFER TUBE	CORE15® Standard Mil-Spec
GAS TUBE	304 Grade Stainless Steel
CHARGING HANDLE	CORE15® HARDCORE V.1 Billet
FLASH HIDER	A2 Flash Hider
STOCK/GRIP	CORE15® Six Position Retractable Stock /A-2 Pistol Grip
TRIGGER GUARD	CORE15® Oversized Trigger Guard
MAGAZINE	Hexmag 30 RD
HARDSHELL CASE	Optional

## CORE15® Scout .223/5.56x45mm NATO 300 AAC Blackout\*

MSRP: \$629.99  
**MSRP: \$649.99**

SKU: 14045  
SKU: 14559

WEIGHT	6 lb. 5 oz. (2.95 kg) Unloaded
IMPINGEMENT	CORE15® Direct Gas Impingement Gas System
AVAILABLE FURNITURE	Black, OD Green and FDE
BARREL	CORE15® 16" Government Profile 1:9 Twist Carbine Length Gas System, 4150 Black Nitride Finish
SIGHT	A Frame Front Sight Base (Forged), rear sight optional
HANDGUARD	M4 Style Thermoset Molded Polymer



## CORE15® KEYMOD Scout 15" Rail .223/5.56x45mm NATO 15" Rail 300 AAC Blackout\*

MSRP: \$769.99  
**MSRP: \$789.99**

SKU: 22548  
SKU: 22548B

WEIGHT	6 lb. 7 oz. (3.03 kg) Unloaded
IMPINGEMENT	CORE15® Direct Gas Impingement Gas System
BARREL	CORE15® 16" 1:9 Twist Carbine Length Gas System, 4150 Black Nitride Finish or *CORE15® 300 Blackout 16" Government Profile 1:7 Twist 4150 Mid-length Gas System Black Nitride Finish
GAS BLOCK	CORE15® Low Profile Gas Block
RAIL SYSTEM	CORE15® M-LOK 15" Rail

**INCLUDES AS STANDARD:**

Welcome Kit - Owner's Manual, CORE15® Lifetime Warranty Registration, Stickers, Dog Tags





mm NATO



CORE15<sup>®</sup> Scout



CORE15<sup>®</sup> M-LOK Scout



SALES, SERVICE, PARTS AND TECHNICAL ASSISTANCE CALL 352-401-9070 OR VISIT [WWW.CORERIFLESYSTEMS.COM](http://WWW.CORERIFLESYSTEMS.COM) TODAY

CORE15<sup>®</sup> and CORE30<sup>®</sup> are registered trademarks of CORE Rifle Systems, A Division of Good Time Outdoors, Inc.

# CORE15® 8.5" Truck Gun

## Standard Features

LOWER RECEIVER	CORE15® Mil-spec forged 7075-T6 lower receiver, type III Class II hard-coat anodized finish, beveled magwell for improved reloading speed, machined chevrons in front of magazine well, bullet pictogram safety markings
UPPER RECEIVER	CORE15® Mil-spec forged 7075-T6 M-4 upper receiver, type III class II hard-coat anodized finish, M4 feed ramps, (1913 picatinny rail flat top) w/dry lube internal finish and laser engraved T-markings
BOLT CARRIER	CORE15® Mil-spec carpenter 158 steel bolt, M16 chrome lined 8620 steel carrier, mil-spec staked gas key, tool steel extractor, shot peened
GAS TUBE	304 Grade Stainless Steel
CHARGING HANDLE	CORE15® HARDCORE V.2 Billet
TRIGGER GUARD	CORE15® Oversized Trigger Guard

## CORE15® 8.5 TRUCK GUN

**.223/5.56x45mm NATO**

MSRP: \$699.99

SKU: 19095

WEIGHT	5.9 lb. (2.68 kg) Unloaded
IMPINGEMENT	CORE15® Direct Gas Impingement Gas System
BARREL	CORE15® 8.5" 1:7 Twist 4150 CMV Carbine Length Gas System, Black Nitride Finish
GAS BLOCK	CORE15® .750 Gas Block
BUFFER TUBE/STOCK	SBA3 Tactical Brace
RAIL SYSTEM	CORE 7" M-LOK Rail
FLASH HIDER	Standard A2 Flash Hider
STOCK/GRIP	Ergo SureGrip
MAGAZINE	Magpul® 30 rd. Magazine

### INCLUDES AS STANDARD:

Welcome Kit - Owner's Manual, CORE15® Lifetime Warranty Registration, Stickers, Dog Tags





mm NATO



CORE15<sup>®</sup> **8.5"** TRUCK GUN



SALES, SERVICE, PARTS AND TECHNICAL ASSISTANCE CALL 352-401-9070 OR VISIT [WWW.CORERIFLESYSTEMS.COM](http://WWW.CORERIFLESYSTEMS.COM) TODAY

CORE15<sup>®</sup> and CORE30<sup>®</sup> are registered trademarks of CORE Rifle Systems, A Division of Good Time Outdoors, Inc.

# CORE15® TACIV KeyMod/M-LOK LW Standard Features

LOWER RECEIVER	CORE15® Mil-spec forged 7075-T6 M-4 upper receiver, type III class II hardcoat anodized finish, M4 feed ramps, (1913 picatinny rail flat top) with dry lube internal finish and laser engraved T-markings
UPPER RECEIVER	CORE15® Mil-spec forged 7075-T6 lower receiver, type III Class II hard-coat anodized finish, beveled magwell for improved reloading speed, machined chevrons in front of magazine well, bullet pictogram safety markings
BOLT CARRIER	CORE15® Enhanced Bolt Carrier Group. Nitride coating for extreme durability and eliminating unwanted wear in the upper receiver. Includes the bolt, cam pin, firing pin and & retaining pin. Enhanced, detailed machining.
GAS TUBE	Black Nitrided Mid-Length Gas Tube
GAS BLOCK	CORE15® Low Pro Gas Block
CHARGING HANDLE	CORE15® HARDCORE V.2
TRIGGER GUARD	CORE15® Oversized Trigger Guard

## CORE15® TAC IV KEYMOD RIFLE

**TAC IV KEYMOD**  
TAC IV-ML OK

**MSRP: \$749.99**  
**MSRP: \$749.99**

SKU: 18743  
SKU: 18744

WEIGHT	7 lb. (3.18 kg) Unloaded
IMPINGEMENT	CORE15® Direct Gas Impingement Gas System
CALIBER	.223/5.56x45mm NATO
BARREL	CORE15® Nitrided 4150 CMV 16" Mid-Length 1:7 Twist
STOCK	MFT Minimalist
RAIL SYSTEM	Manticore Arms Transformer 15" Rail (removeable segments: KEYMOD or M-LOK) M-LOK Segments will NOT include the CORE® RMD
MUZZLE BRAKE	CORE15® Muzzle Brake
SIGHTS	Sights Optional
GRIP	Ergo Sure Grip
MAGAZINE	Magpul® 30 rd. Magazine
ADDITIONAL FEATURES	CORE15® Ambidextrous Safety Selector, AMBI Sling Adapter, Recoil Management Device (Keymod Only)

## CORE15® TAC IV LW RIFLES

**TAC IV LW KEYMOD**  
TAC IV LW M-LOK

**MSRP: \$749.99**  
**MSRP: \$749.99**

SKU: 21490  
SKU: 21491

WEIGHT	5.8 lb. (2.63 kg) Unloaded
IMPINGEMENT	CORE15® Direct Gas Impingement Gas System
CALIBER	.223/5.56x45mm NATO
BARREL	CORE15® Nitrided 4150 CMV 14.5" Mid-Length 1:7 Twist
STOCK	MFT Minimalist
RAIL SYSTEM	Manticore Arms Transformer 15" Rail (removeable segments: KEYMOD or M-LOK) ML-OK Segments will NOT include the CORE® RMD
MUZZLE BRAKE	CORE15® Muzzle Brake
SIGHTS	Sights Optional
GRIP	Ergo Sure Grip
MAGAZINE	Magpul® 30 rd. Magazine
ADDITIONAL FEATURES	CORE15® Ambidextrous Safety Selector, AMBI Sling Adapter, Recoil Management Device (KeyMod Only)





rim MATO



CORE15<sup>®</sup> TAC IV RIFLE



CORE15<sup>®</sup> TAC IV LW RIFLE



SALES, SERVICE, PARTS AND TECHNICAL ASSISTANCE CALL 352-401-9070 OR VISIT [WWW.CORERIFLESYSTEMS.COM](http://WWW.CORERIFLESYSTEMS.COM) TODAY

CORE15<sup>®</sup> and CORE30<sup>®</sup> are registered trademarks of CORE Rifle Systems, A Division of Good Time Outdoors, Inc.

# Gas Impingement and Gas Piston Operating Systems Explained

If there is any one subject in the AR-15 community that has folks talking, it is certainly piston driven operating systems. While still relatively new to the scene, piston systems have definitely garnered plenty of attention. The first and most obvious question to those new to the subject... just what is a piston operated AR? To answer that properly, it's best to first step back and take a close look at the original concept, direct gas impingement.

In direct gas impingement operation, a small hole is drilled through the barrel, where upon after the bullet passes by a small but potent portion of the still-expanding gases are vented through and into a stainless steel tube. At that point the gases are directed back to the action itself, driving back the bolt and cycling the action. While battle-proven and highly reliable in its own right, the basis of direct gas operation puts a tremendous amount of heat and no small amount of fouling directly back into the action itself. If kept clean and properly lubricated, this system will continue to cycle and function for many thousands of rounds.

With a piston-operated system, the same hole in the barrel exists and the gases vent through it in turn, but that is where the similarities end. In place of the stainless steel tube is a solid, machined rod of steel (commonly referred to as the op-rod). When the gases vent to the gas block, they interface on a plunger around which the op-rod is fitted. The steel rod, running across the same space that would be otherwise occupied by the gas tube, interfaces on the bolt carrier. When the gun is fired the expanding gases push the rod back in turn acting upon the bolt and thus cycling the action. Any excess gas is vented off at the gas block itself, well in front of the action and the shooter. This system is cleaner in operation and has a markedly different recoil pulse or "feel".

The main aspect to keep in mind when comparing these two aerations is that both are solid, well proven systems in their own right, each with its own strong points. In deciding which one is right for your application, just know you can't go wrong either way. If you have any further questions, the answer is as close as visiting our web site or your nearest CORE Rifles Systems Authorized Dealer.

## CORE15® TAC 6.5 Grendel RIFLE Standard Features



CALIBER	6.5mm Grendel
WEIGHT	6 lb. 5 oz. (2.95 kg) Unloaded
BARREL	CORE15® 18" & 20" Government profile 1:8 twist 4150 rifle length gas system, black nitride finish, fluted *CORE15® 18" & 20" Government profile 1:8 twist 4150 rifle length gas system, bead blasted stainless steel, fluted
LOWER RECEIVER	CORE15® Mil-spec forged 7075-T6 lower receiver, type III class II hard-coat anodized finish, beveled magwell for improved reloading speed, machined chevrons in front of magazine well, bullet pictogram safety markings
UPPER RECEIVER	CORE15® Mil-spec forged 7075-T6 M4 upper receiver, type III Class II hard-coat anodized finish, M4 feed ramps, (1913 picatinny rail flat top) w/dry lube internal finish and laser engraved T-markings
BOLT CARRIER	CORE15® Mil-spec carpenter 158 steel bolt, M16 chrome lined 8620 steel carrier, mil-spec staked gas key, tool steel extractor, shot peened
TRIGGER GROUP	CMC Single Stage 3.5lb. Trigger (Flat or Curved)
GAS BLOCK	CORE15® Low Profile Gas Block
GAS TUBE	304 Grade Stainless Steel
CHARGING HANDLE	CORE15® HARDCORE V.2 Billet
MUZZLE BRAKE	CORE15® Muzzle Brake
RAIL SYSTEM	CORE15® M-LOK 15" Rail
STOCK	Hogue Six Position Retractable (Mil-Spec)
GRIP	Ergo Pistol Grip
TRIGGER GUARD	CORE15® Oversized Trigger Guard
MAGAZINE	5 RD Stainless Steel Magazine



**INCLUDES AS STANDARD:**  
 CORE15® Hardshell Case, Welcome Kit - Owner's Manual, CORE15® Lifetime Warranty Registration, Stickers, Dog Tags



GRENDDEL



CORE15® **TAC 6.5 Grendel Rifle**



**18" Black Nitride Fluted Barrel**  
**18" SS Fluted Barrel**

**MSRP: \$929.99**  
**MSRP: \$959.99**

SKU: 14555  
SKU: 14552

**20" Black Nitride Fluted Barrel**  
**20" SS Fluted Barrel**

**MSRP: \$929.99**  
**MSRP: \$959.99**

SKU: 14554  
SKU: 14553







\* NOTE: Shown with optional sight



# CORE15<sup>®</sup> **HARDCORE SYSTEM X Rifles**

This latest addition to the CORE family of quality products includes a multitude of base features and is available in four feature packed systems: HARDCORE X1 and X4. This new rifle system is the result of many hours of research, development and testing across all venues.

CORE's Lifetime Warranty coupled with other features that are unique to the HARDCORE line, this new rifle product line is chambered in .223/5.56x45mm NATO or 6.5mm Grendel, and has the potential of rivalling other rifles well above its price range.

Features included: CORE Rifle Systems "Factory Accuracy Guarantee" to shoot sub MOA, an all-new matching serialized



CORE15<sup>®</sup> Billet Upper and Lower, CORE15<sup>®</sup> Nickel Boron Bolt Carrier Group, CORE15<sup>®</sup> Barrel made entirely in-house that starts with premium raw 4150 steel cut to length, drilled,

rifled and profiled. The rest is black magic only found in CORE's barrel processes. Followed up by testing each barrel for quality, accuracy and reliability. This includes a CORE15<sup>®</sup> Extruded Aluminum Keymod Rail, in-house Cerakote finish as well as many other exciting features. To round things off, a Boyt HM44 Hardshell Case, MAGPUL<sup>®</sup> 20 and 30 round magazines, Range Log, Otis Technologies MSR/AR cleaning system and a Frog Lube Tube<sup>®</sup>.

All firearms are assembled and test fired to ensure the highest of standards in this new all billet platform. We also include a test fire target and a CORE Range Log to track all of your range sessions for the life of this rifle.



**SALES, SERVICE, PARTS AND TECHNICAL ASSISTANCE CALL 352-401-9070 OR VISIT [WWW.CORERIFLESYSTEMS.COM](http://WWW.CORERIFLESYSTEMS.COM) TODAY**

CORE15<sup>®</sup> and CORE30<sup>®</sup> are registered trademarks of CORE Rifle Systems, A Division of Good Time Outdoors, Inc.

## HARDCORE SYSTEM X

# Standard Features

LOWER RECEIVER	CORE15® <b>HARDCORE</b> Billet Lower, machined from solid 7075-T6 aluminum alloy, in-house Sniper Grey cerakote, lo-profile, heavily beveled and relieved magwell, oversized integral trigger guard, bullet pictogram safety markings
UPPER RECEIVER	CORE15® <b>HARDCORE</b> billet upper machined from solid 7075-T6 aluminum alloy, in-house Sniper Grey Cerakote, serialized to match with lower
BOLT CARRIER	CORE15® Nickel boron coated M16 chrome lined 8620 steel carrier, magnetic particle inspected bolt (MPI), mil-spec carpenter 158® steel bolt, chrome lined gas key hardened to USGI specs with grade 8 hardened fasteners, mil-spec staked, tool steel extractor upgrade, extractor spring, M16 profile, shot peened. *6.5mm Grendel has different bolt face (Black Nitride BCG Optional)
BUFFER TUBE	CORE15® Standard Mil-Spec Buffer Tube
GAS TUBE	304 Grade Stainless Steel
CHARGING HANDLE	CORE15® <b>HARDCORE</b> Scalloped Billet
MUZZLE BRAKE	CORE15® Muzzle Brake
GRIP	Black Hogue® Rubber Grip
TRIGGER GROUP	CMC Trigger Group Two-Stage 2lb Brake /2lb Reset
TRIGGER GUARD	Integral Oversized Trigger Guard
SAFETY	Ambidextrous Safety, Battle Arms Development Anti Rotation Pins
MAGAZINE	Magpul® Gen3 20 RD & 30 RD Magazine *6.5mm Grendel ACS 25 RD Magazine

### INCLUDES AS STANDARD:

Boyt H44 Compact Rifle/Carbine Case, Otis® MSR/AR Cleaning Kit, Frog Lube® Tube, CORE15® Welcome Kit (Manual, Warranty Registration, CORE15® Stickers, Dog Tags).

### HARDCORE Documentation to include:

Certificate of Authenticity, Range Log /Accuracy Guarantee, Verification Target with Serial Numbers Matching Barrel, Upper & Lower Receiver

## CORE15® **HARDCORE System X1 Rifle**



CALIBER	.223/5.56x45mm NATO or 6.5mm Grendel
BARREL	CORE15® 16" Mid-Length 1:7 Twist, 4150 Fluted Black Nitride Finish / * CORE15® 18" 6.5 Grendel Government Profile 1:8 Twist Rifle Length Gas System Fluted (Available in SS Bead Blasted or Black Nitride)
RAIL SYSTEM	CORE15® 15" Aluminum Keymod Rail, Machined from 6005 Aluminum Alloy, In-House Sniper Grey Cerakote
BUFFER/SPRING	H2 Buffer / Wolff Buffer Spring
GAS BLOCK	CORE15® Angled Groove Low Pro Gas Block
SIGHTS	Magpul® MBUS® Pro Front & Rear
STOCK	Magpul® ACS™ (Adaptable Carbine/Storage)

## CORE15® **HARDCORE System X3 Rifle**



CALIBER	.223/5.56x45mm NATO or 6.5mm Grendel
BARREL	CORE15® Fluted 18" Rifle Length/Standard Profile 1:7 Twist, 4150 Black Nitride Finish / * CORE15® 20" 6.5 Grendel, Government Profile, 1:8 Twist, 4150 Rifle Length Gas System Fluted (Available in SS Bead Blasted or Black Nitride)
RAIL SYSTEM	CORE15® 15" Aluminum Keymod Rail, Machined from 6005 Aluminum Alloy, In-House Sniper Grey Cerakote
BUFFER/SPRING	H2 Buffer / Wolff Buffer Spring
GAS BLOCK	CORE15® Angled Groove Low Pro Gas Block
SIGHTS	Magpul® MBUS® Pro Front & Rear
STOCK	Magpul® ACS™ (Adaptable Carbine/Storage)





## CORE15® **HARDCORE System X1 Rifle**

**LEFT HAND AVAILABLE**

**16" .223/5.56x45mm NATO MSRP: \$1950.99** SKU: 11992

**18" 6.5 Grendel Blk Nitride Fluted Barrel\* MSRP: \$2100.99** SKU: 14698

**18" 6.5 Grendel SS Fluted Barrel\* MSRP: \$2100.99** SKU: 14697



## CORE15® **HARDCORE System X3 Rifle**

**LEFT HAND AVAILABLE**

**18" .223/5.56x45mm NATO MSRP: \$2050.00** SKU: 11994

**20" 6.5 Grendel Blk Nitride Fluted Barrel\* MSRP: \$2200.00** SKU: 14676

**20" 6.5 Grendel SS Fluted Barrel\* MSRP: \$2200.00** SKU: 14677



**SALES, SERVICE, PARTS AND TECHNICAL ASSISTANCE CALL 352-401-9070 OR VISIT [WWW.CORERIFLESYSTEMS.COM](http://WWW.CORERIFLESYSTEMS.COM) TODAY**

CORE15® and CORE30® are registered trademarks of CORE Rifle Systems, A Division of Good Time Outdoors, Inc.



In our pursuit of excellence we invested in the Bill Wiseman Accuracy Test Fixture. During the test phase, we mount completed uppers onto the test fixture and lock it in just as you would on a complete lower. We then insert a typical magazine and fire for effect. The Test Fixture employs a pneumatic firing process which means no human error on manipulating the trigger. It fires the complete upper the same each and every time. By doing this, we look for initial groupings down range. We look for consistent three-hole groups on the target.

Our most important goal is to achieve a tight three shot group on the target consistently. This also works extremely well on zeroing optics to the upper.

The results with our CORE Rifle Systems barrels have been amazing. It gives you immediate feedback on accuracy and consistency. We use the Bill Wiseman Accuracy Test Fixture on both .223/5.56 and .308 platforms manufactured by CORE Rifle Systems.

# CORE30®

## .308 Caliber Rifle System

With the popularity of large caliber automatics growing every day, CORE Rifle Systems is proud to offer our CORE30®, combining CORE Rifle Systems relentless dedication to the cutting edge with the tried and true power of 308-class cartridges, the results are nothing short of astounding.

Born of a solid block of 7075-T6 aluminum, the CORE30® line combines CORE Rifle Systems trademark precision and unerring attention to detail with the finest parts and materials available. Machined in concert with the popular SR-25® style platform, parts interchangeability, after-market parts and magazine availability are not a concern. With four distinct models covering a wide range of uses and situations, there is truly something for everyone. From dedicated tactical platforms for our LE and government, to the incredible precision of the LR line. If speed, distance and knock down power are your needs, the CORE30® line of rifles will accommodate your every need.







**SALES, SERVICE, PARTS AND TECHNICAL ASSISTANCE CALL 352-401-9070 OR VISIT [WWW.CORERIFLESYSTEMS.COM](http://WWW.CORERIFLESYSTEMS.COM) TODAY**  
CORE15® and CORE30® are registered trademarks of CORE Rifle Systems, A Division of Good Time Outdoors, Inc.



# CORE30® TAC II & TAC II LW Standard Features

LOWER RECEIVER	CORE30® Billet Lower, CNC Machined from solid 7075-T6 aluminum alloy integral oversized trigger guard, type III hard-coat anodized finish
UPPER RECEIVER	CORE30® Billet Upper, CNC Machined from solid 7075-T6 aluminum alloy with 1913 picatinny rail and laser engraved T-markings
BOLT CARRIER	CORE30® Chrome lined 8620 steel carrier, magnetic particle inspected Bolt (MPI), mil-spec carpenter 158® steel bolt, chrome lined gas key hardened to USGI specs with grade 8 hardened fasteners, mil-spec staked, tool steel extractor upgrade, extractor spring, shot peened
BUFFER TUBE	CORE30® Standard Mil-Spec
GAS BLOCK	CORE30® Low Profile Gas Block (.750")
CHARGING HANDLE	CORE30® Billet Charging Handle V.3
TRIGGER GUARD	Integral Oversized Trigger Guard
MAGAZINE	Magpul® PMAG® 20 RD



## CORE30® TAC II Rifle

CALIBER	.308 Winchester or 6.5mm Creedmoor
WEIGHT	9 lbs. (4.08 kg) Unloaded
BARREL .308 SPECIFICATION	CORE30® 16" and 18" Mid-Length, 1:10 Twist, 4150 CRMOV 5/8x24 TPI, Black Nitride Finish CORE30® 16" and 18" Mid-Length, 1:10 Twist, 416R SS Match Grade
BARREL 6.5mm SPECIFICATION	CORE30® 20" and 22" Rifle Length Gas System, 1:8 Twist, 4150, Black Nitride Finish CORE30® 20" and 22" Rifle Length Gas System, 1:8 Twist, 416R Fluted SS, Bead Blasted Finish
RAIL SYSTEM	CORE30® 15" KeyMod Rail
MUZZLE BRAKE	CORE30® Muzzle Brake
STOCK/GRIP	Magpul® ACS Six Position Stock, Magpul® MOE® Grip
TRIGGER	CMC 3.5 Single Stage Trigger

## CORE30® TAC II LW Rifle

CALIBER	.308 Winchester
WEIGHT	8.5 lbs. (3.855 kg) Unloaded
BARREL	CORE30® 14.5" Mid-length Standard Profile 1:10 Twist 5/8x24 TPI, 416R Stainless Steel Match Grade
RAIL SYSTEM	CORE30® 12.5" KeyMod Rail
MUZZLE BRAKE	CORE30® Muzzle Brake
STOCK/GRIP	MFT Minimalist Stock and Grip
TRIGGER	CMC 3.5 Single Stage Trigger

**INCLUDES AS STANDARD:**

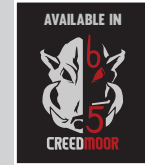
CORE30® Hardshell Case, CORE30® Welcome Kit - Owner's Manual, CORE15® Lifetime Warranty Registration, Stickers, Dog Tags





## CORE30® TAC II Rifle

**LEFT HAND AVAILABLE**



### .308 WINCHESTER BARREL OPTIONS

<b>16" 1:10 Twist Black Nitride</b>	<b>MSRP: \$1399.99</b>	SKU: 14902
16" 1:10 Twist Stainless Steel	MSRP: \$1449.99	SKU: 14904
<b>18" 1:10 Twist Black Nitride</b>	<b>MSRP: \$1449.99</b>	SKU: 14905
18" 1:10 Twist Stainless Steel	MSRP: \$1449.99	SKU: 14903

### 6.5 CREEDMOOR BARREL OPTIONS

<b>20" 1:8 Twist Black Nitride</b>	<b>MSRP: \$1449.99</b>	SKU: 14898
20" 1:8 Twist Stainless Steel	MSRP: \$1449.99	SKU: 14899
<b>22" 1:8 Twist Black Nitride</b>	<b>MSRP: \$1449.99</b>	SKU: 14900
22" 1:8 Twist Stainless Steel	MSRP: \$1449.99	SKU: 14901



## CORE30® TAC II LW Rifle

MSRP: \$1110.00 SKU: 11632

**LEFT HAND AVAILABLE**



SALES, SERVICE, PARTS AND TECHNICAL ASSISTANCE CALL 352-401-9070 OR VISIT [WWW.CORERIFLESYSTEMS.COM](http://WWW.CORERIFLESYSTEMS.COM) TODAY

CORE15® and CORE30® are registered trademarks of CORE Rifle Systems, A Division of Good Time Outdoors, Inc.

# Law Enforcement and Government CORE Rifle Systems

For those in the Law Enforcement, government, properly licensed dealers or individuals, we offer a full complement of suppressed and post-sample fully automatic options. Pictured here is but a small sample of our capabilities. As with our entire line, your imagination is the only limiting factor and our reputation for accuracy, reliability & quality is unsurpassed in the industry. All NFA regulations apply.

Our dedicated Law Enforcement, Federal & Military departments will provide you with the firearms that are tailored to your needs.

Law Enforcement Sales  
Phone: 352-401-9070  
Email: doug@core15.com



2015 SWAT ROUND-UP INTERNATIONAL CHAMPIONS  
Special Weapons and Tactics Unit (SWAT) - Marion County, Florida

## Twist Rates Explained

One of the biggest single leaps in firearms technology came in the mid-16th century when it was discovered that imparting spin to a projectile greatly increased the accuracy and range. Ever since that time ballisticians and engineers alike have debated endlessly the merits of one twist rate over another for a given caliber, projectile, and distance. Over the last 20 years, advancements in technology and production have given us unprecedented capability to fine tune our barrels and twist rates.

Thanks in large part to the work of those aforementioned intellectuals, there is very little mystery in choosing a twist rate for your next .223/5.56. The single phrase to keep in mind is "the heavier the bullet, the faster the twist rate needs to be". For the all around shooter, a 1:7 or 1:8 twist rate will stabilize virtually all commercially available projectiles for the .223 and 5.56 NATO. If you plan to do quite a bit of shooting with very light, fast projectiles (varmint hunters take note), moving to a 1:9 twist barrel would be an excellent idea. For the majority of shooters to whom the .223 and 5.56 NATO bullet weights begin and end at 55 grains, any of the above will work wonderfully. The one shooter that truly needs to take note of twist rate is the long range, heavy bullet enthusiast (64 gr or heavier). For that type of shooting, one of the faster twist rates are a must.

While entire books have been written on nothing more than twist rates and the ensuing stabilization, we sincerely hope the above has taken some of the mystery out of selecting a twist rate for your next project. Keep in mind if the rifle you prefer is not listed with your ideal twist rate, we are happy to customize. If you have further questions, please see your nearest CORE Rifle Systems Authorized Dealer or contact us directly.



Enforcement



**CORE15® TAC IV Rifle**  
*Pricing on Request*

CORE Rifle Systems firearms are amongst the most sought after rifles for the law enforcement community. Contact our LE sales representative at (352) 401-9070 for these and other models.

We also can assist in the design and build around each departments needs.



**SALES, SERVICE, PARTS AND TECHNICAL ASSISTANCE CALL 352-401-9070 OR VISIT [WWW.CORERIFLESYSTEMS.COM](http://WWW.CORERIFLESYSTEMS.COM) TODAY**

CORE15® and CORE30® are registered trademarks of CORE Rifle Systems, A Division of Good Time Outdoors, Inc.



## Carbine and Mid-Length Explained

The debate between Carbine and Mid-Length systems has raged for quite some years. The first thing to understand is that there is no right or wrong answer – simply advantages and disadvantages. As you’ve seen here at CORE, we’re willing to cater to either preference. However, a little insight and education on the differences may help in your decision.

The primary consideration when choosing either way is overall length of the barrel. The operative measurement here is the distance from the gas port to the crown of the muzzle. This is the amount of barrel that remains after the bullet has passed the gas port and is thus forcing high-pressure, high-temp gases into the action. This is commonly referred to as dwell time. Having the gas port closer to the crown, as with a mid-length system, reduces dwell time and thus lessens the total volume of gases forced back into the action in cycling. The advantages here are a moderately reduced recoil pulse, overall smoother operation and reduced wear on parts, with the trade-off being very slightly reduced reliability under extreme or exceptional conditions.

As for carbine length systems, that dwell time (again, heavily dependent on overall barrel length) can be significantly higher. The carbine-length system will force more gases back to the action over a longer duration, barrel lengths being equal. This imparts more force to the key and carrier, thus cycling the action quicker, with more authority and with an exceptional level of reliability, though the trade-off comes in the form of an increased recoil pulse and lightly exaggerated parts wear over time.

As you can see, neither system stands head and shoulders above the other. They are simply two variations of an operating system that gives the shooter one more option to tune their weapon to a specific usage. Hopefully this quick explanation has given you an idea of what those are, and will help you decide on which system is best suited for your application.

### 5.56x45mm NATO & .22 LR

## CORE15® COMPLETE UPPERS

UPPER RECEIVER	CORE15® Mil-spec forged 7075-T6 M-4 upper receiver, type III class II hard-coat anodized finish, M4 feed ramps, (1913 picatinny rail flat top) w/dry lube internal finish and laser engraved T-markings
CHARGING HANDLE	CORE15® Charging Handle
FLASH HIDER	A2 Flash Hider
WARRANTY	CORE NO BS Lifetime Warranty
OWNERS MANUAL	CORE15® Owner’s Manual

CORE15® 16" Government Profile 1:9 Twist, 4150, Carbine Length Gas System, Black Nitride Finish, A2 Flash Hider, Direct Gas Impingement Gas System, Gas Tube made of 304 grade Stainless Steel, CORE15® Mil-Spec Carpenter 158 Steel Bolt, M16 Chrome Lined 8620 Steel Carrier, Mil-Spec Staked Gas Key, Tool Steel Extractor, Shot Peened, CORE15® HARDCORE Charging Handle V.1, M4 Style Thermoset molded Polymer, A Frame Front Sight Base (Forged)

CORE15® Scout Upper  
MSRP: \$429.99 SKU: 15893  
Piston Upper MSRP: \$679.99 SKU: 13128



18" Black Nitride Fluted Barrel MSRP: \$499.99 SKU: 14583  
18" Stainless Steel Fluted Barrel\* MSRP: \$499.99 SKU: 14585

## CORE15® TAC 6.5mm Grendel Upper

20" Black Nitride Fluted Barrel MSRP: \$549.99 SKU: 14582  
20" Stainless Steel Fluted Barrel\* MSRP: \$549.99 SKU: 14584

CORE15® 18" & 20" Government Profile 1:8 Twist 4150 Rifle Length Gas System, Black Nitride Finish, Fluted, \*CORE15® 18" & 20" Government Profile 1:8 Twist 4150 Rifle Length Gas System, Bead Blasted Stainless Steel, Fluted, CORE15® Muzzle Brake, Direct Gas Impingement Gas System, 304 Grade Stainless Steel Gas Tube, CORE15® Low Profile Gas Block, CORE15® Mil-Spec Carpenter 158 Steel Bolt, M16 Chrome Lined 8620 Steel Carrier, Mil-Spec Staked Gas Key, Tool Steel Extractor, Shot Peened, CORE15® HARDCORE V.2 Billet Charging Handle, CORE15® M-LOK 15" Rail





CORE15® Mil-Spec Forged 7075-T6 M4 Upper Receiver, Dedicated 16" .22 Long Rifle 1:16 Twist, 4140 Nitride Coated Barrel, A2 Flash Hider, Nickel Boron Coated dedicated .22 Long Rifle Bolt Carrier Group, A Frame Front Sight Base (Forged), M4 Style Thermo-molded Polymer and Guards with single Heat Shields, CORE15® Hardcore Charging Handle V.1

**CORE15® M4 .22 Long Rifle Upper**  
**MSRP: \$514.99** SKU: 1121



CORE15® Mil-Spec Forged 7075-T6 M4 Upper Receiver, 8.5" 4150 Nitride Coated Barrel, A2 Flash Hider, Black Nitride Coated Bolt Carrier Group, CORE® 7" Free Float M-LOK Rail, CORE® V.2 Charging Handle, CORE® Lo-Pro Gas Block

**CORE15® Truck Gun Upper**  
**MSRP: \$449.99** SKU: 21225



## .22 LONG RIFLE CORE15® Uppers

What better way to shoot a .22 LR than shooting it through an AR platform?

Our .22 LR uppers are not just a "drop in conversion" but also rather a dedicated .22 rimfire upper.

With the same feel and function as a standard AR-15, the .22 LR uppers from CORE will allow you to train with your existing lower receiver thus giving you an inexpensive way to make yourself more efficient with your weapon system.

CORE15® .22 LR uppers utilize the correct 1:16 twist rate for the .22 LR round and eliminates the problem of fouling AR-15 gas tubes with dirty rimfire ammunition. Our .22 LR bolts are Nickel Boron coated to give them the utmost lubricity and efficiency while firing and making them easier to clean and maintain. CORE's dedicated .22 rimfire uppers come with one (1) Black Dog Machine 26 RD Magazine.

.22 Upper  
**Demo Video**









# Genuine CORE Barrels

From the beginning, CORE Rifle Systems has exercised a relentless pursuit of vertical integration. That is to say, the more parts of our rifles we make in house, the better. With that tenet in mind, we knew one of the most significant steps we could take was to bring our barrel manufacturing under our own roof. We are proud to say that after months of hard work, investment, testing and retesting, every rifle built here at CORE will come equipped with a genuine CORE Rifle Systems button rifled barrel.

From the start, we had no intention of settling for just any run of the mill barrel. We tested barrels from several of the largest industry suppliers and used those as a baseline to be exceeded at all costs. To that end, we spared no expense in maintaining the production standards everyone has come to expect of CORE Rifle Systems to produce a truly world class barrel. While the term match grade is thrown around with reckless abandon, we have the highest level of confidence that the barrels coming out of our facility will meet whatever YOUR definition of that term is. To back that up, our industry-leading CORE Warranty puts serious teeth in that claim.



## CORE15® .223/5.56x45mm NATO BARRELS

SKU	LGTH	BARREL DESCRIPTION	WEIGHT
#12559	10.5"	STD Profile, 1:7 Twist, Carbine Length Gas System, 4150, Black Nitride	1lb-8.2oz
#99084	14.5"	Pencil Profile, 1:7 Twist, Mid-Length Gas System, 4150 Chrome Lined, Black Nitride	1lb-4.4oz
#13063	14.5"	Pencil Profile, 1:7 Twist, Mid-Length Gas System, 4150, Black Nitride	1lb-4.6oz
#13205	16"	GOV Profile, 1:9 Twist, Carbine Length Gas System, 4150, Black Nitride	1lb-14.2oz
#12108	16"	STD Profile, 1:7 Twist, MID Length Profile, 4150, Black Nitride	2lb-4.4oz
#13526	16"	GOV Profile, 1:7 Twist, Carbine Length Gas System, 4150, Black Nitride	1lb-14oz
#12155	18"	GOV Profile, 1:7 Twist, Mid Length Gas System, 4150 Fluted, Black Nitride	2lb-6oz
#14919	18"	STD Profile, 1:7 Twist, Rifle Length Gas System, 4150 Fluted, Black Nitride	1lb-7.8oz

## CORE15® .300 BLACKOUT BARRELS

#13162	10.5"	STD Profile, 1:7 Twist, Pistol Length Gas System, 4150, Black Nitride	1lb-5.5oz
#100360	16"	STD Profile, 1:7 Twist, Carbine Gas System, 4150 Black Nitride	2lb-1oz
#98012	16"	STD Profile, 1:8 Twist, Carbine Gas System, 416R Bead Blasted	1lb-15.4oz

*“The Constitution of most of our states (and of the United States) assert that all power is inherent in the people; that they may exercise it by themselves; that it is their right and duty to be at all times armed.”*

*- Thomas Jefferson*

Black Phosphate or Nitride Finish



Fluted Stainless Steel Bead Blasted Finish



Fluted, Black Nitride Finish



### CORE30® .308 WINCHESTER BARRELS

SKU	LGTH	BARREL DESCRIPTION	WEIGHT
#5518	16"	STD Profile, 1:10 Twist, Mid-Length Gas System, 4150 Black Nitride	2lb-6oz
#100596	18"	STD Profile, 1:10 Twist, Mid-Length Gas System, 416R Bead Blasted	2lb-8.6oz
#13799	18"	STD Profile, 1:10 Twist, Mid-Length Gas System, 4150 Black Nitride Fluted	TBA
#77207	16"	STD Profile, 1:10 Twist, Mid-Length Gas System, 416R Black Oxide	2lb-6.2oz

### CORE15® 6.5mm GRENDL BARRELS

#14390	18"	STD Profile, 1:8 Twist, Rifle System, 416R Fluted, Bead Blasted	2lb-6oz
#14388	18"	STD Profile, 1:8 Twist, Rifle System, 4150 Fluted, Black Nitride	2lb-8.9oz
#14389	20"	STD Profile, 1:8 Twist, Rifle System, 416R Fluted, Bead Blasted	2lb-9oz
#14391	20"	STD Profile, 1:8 Twist, Rifle System, 4150 Fluted, Black Nitride	2lb-11oz

### CORE30® 6.5mm CREEDMOOR BARRELS

#14706	20"	STD Profile, 1:8 Twist, Rifle System, 416R Fluted, Bead Blasted	2lb-6oz
#14671	20"	STD Profile, 1:8 Twist, Rifle System, 4150 Fluted, Black Nitride	2lb-8.9oz
#14704	22"	STD Profile, 1:8 Twist, Rifle System, 416R Fluted, Bead Blasted	2lb-9oz
#14670	22"	STD Profile, 1:8 Twist, Rifle System, 4150 Fluted, Black Nitride	2lb-11oz



# Forged and Billet Explained

## FORGED

Our Receivers start off as impressions from a die referred to as a closed die forging. The aluminum is then placed in a die resembling a mold, which is attached to the anvil. Usually the hammer die is shared as well. The hammer is then dropped on the workpiece, causing the metal to flow and fill the die cavities. The hammer is generally in contact with the workpiece on the scale of milliseconds. Depending on the size and complexity of the part the hammer may be dropped multiple times in quick succession.

## BILLET

Bar stock, also colloquially known as billet, is a common form of raw purified metal, used to manufacture metal parts and products. Most metal produced by a steel mill or aluminum plant is formed (via rolling or extrusion) into long continuous strips of various size and shape. These strips are cut at regular intervals and allowed to cool, each segment becoming a piece of bar stock. A good analogy is pasta making, in which lumps of dough are extruded into various cross-sectional shapes (from simple bar or tube shapes, such as linguine or penne, to more elaborate extrusions, such as rotelle, fiori, or rotini); cut into lengths; and then dried in that form.

Both styles of manufacturing give you high quality, durable components. All of our receivers are made from 7075-T6 Aluminum.

## EXCLUSIVELY from CORE Rifle Systems

Made from a solid piece of aluminum that has been heat treated, stress relieved and ready to be machined. Billet receivers are stronger and can hold a tighter tolerance than a forged receiver.

Our unique CORE15® low profile beveled magazine well gives you a faster acquisition for inserting and releasing magazines.

The CORE15® Hardcore Oversized Trigger Guard is designed to accommodate shooters with gloves and is ideal for law enforcement and 3-gun competition shooters!

- CORE15® Hardcore Billet Lower machined from solid 7075-T6 aluminum alloy
- Type III class II Hard coat anodized
- Heavily beveled and relieved magazine well
- Oversized integral trigger guard
- Bullet pictogram safety markings



## CORE15<sup>®</sup> Billet Lower Receiver

MSRP: \$216.00

SKU: 100286



## CORE15<sup>®</sup> Billet Upper Receiver

MSRP: \$200.00

SKU: 100737



## CORE15<sup>®</sup> Upper Receiver

MSRP: \$85.00

SKU: 99969



## CORE15<sup>®</sup> Lower Receiver

MSRP: \$79.99

SKU: 100258



SALES, SERVICE, PARTS AND TECHNICAL ASSISTANCE CALL 352-401-9070 OR VISIT [WWW.CORERIFLESYSTEMS.COM](http://WWW.CORERIFLESYSTEMS.COM) TODAY

CORE15<sup>®</sup> and CORE30<sup>®</sup> are registered trademarks of CORE Rifle Systems, A Division of Good Time Outdoors, Inc.







## CORE15® Carbine Length Piston Kit

MSRP: \$369.99 SKU: 99691

- Patented One-Piece Bolt Carrier
- .750" Picatinny Gas Block with 3 settings (full gas for standard fire, half gas for suppressed, and no gas for single shot)
- Gas Plug



- Upper Receiver Bushing
- Bushing Installation Rod
- Bolt Spring
- Drive Rod with Bushing and Spring

## CORE15® Bolt Carrier Group

MSRP: \$119.99 SKU: 17247

- Magnetic Particle Inspected Bolt (MPI)
- Mil-spec Carpenter 158® Steel Bolt
- M16 Chrome lined 8620 Steel Carrier
- Chrome lined Gas Key
- Gas Key Hardened to USGI Specs with Grade 8 Hardened Fasteners
- Mil-spec Staked Gas Key



- Tool Steel Extractor Upgrade
- Extractor Spring
- M16 Profile
- Includes the Bolt, Cam Pin, Firing Pin & Retaining Pin
- Shot Peened
- Rated for full auto

## CORE15® Nickel Boron Bolt Carrier Group

MSRP: \$149.99 SKU: 12493

- Mil-spec Carpenter 158® Steel Bolt
- M16 8620 Steel Carrier
- Nickel Boron Coating
- Gas Key Hardened to USGI Specs with Grade 8 Hardened Fasteners
- Mil-spec Staked Gas Key



- Tool Steel Extractor Upgrade
- Extractor Spring
- M16 Profile
- Includes the Bolt, Cam Pin, Firing Pin, & Retaining Pin
- Shot Peened
- Rated for full auto

## CORE15® Enhanced Nitride Bolt Carrier Group

**.223/5.56x45mm NATO** MSRP: \$119.99 SKU: 15065

**.308 Winchester** MSRP: \$199.99 SKU: 15064

- Mil-spec Carpenter 158® Steel Bolt Magnetically Particle Inspected
- M16 Chrome Lined Full Auto Style 8620 Steel Carrier for faster lock time.
- Gas Key Hardened to USGI Specs with Grade 8 Hardened Fasteners
- Mil-spec Staked Gas Key
- Tool Steel Extractor Upgrade
- Extractor Spring

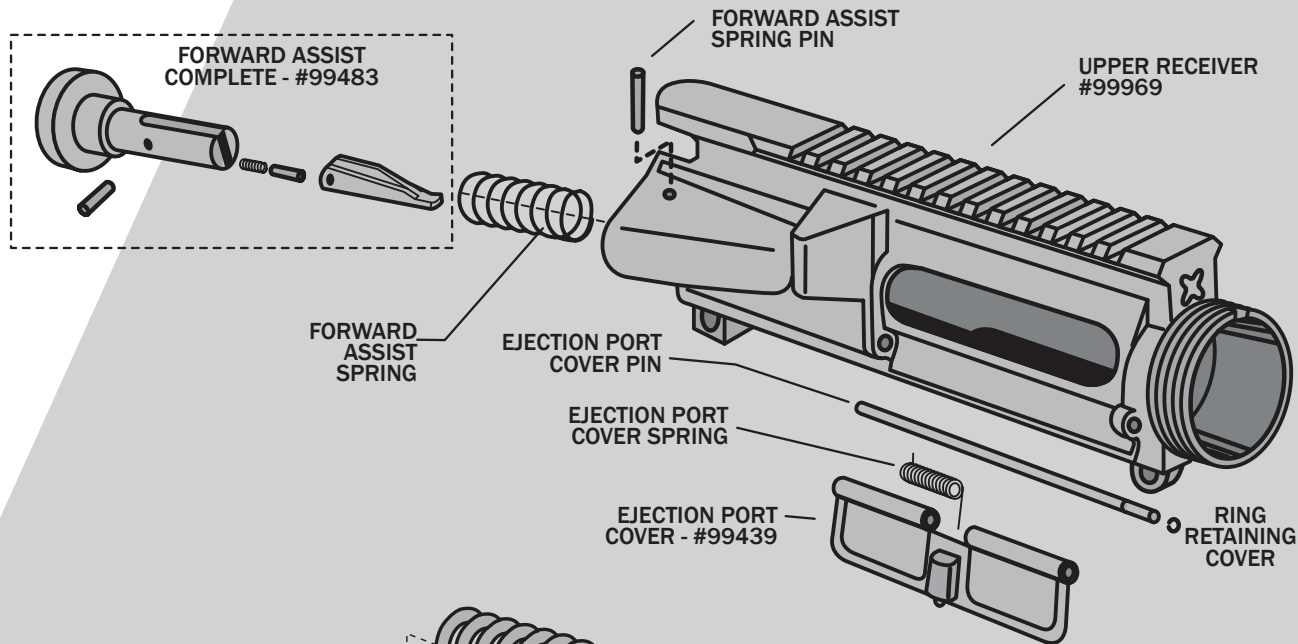


- Nitride Coating for Extreme Durability and eliminating unwanted wear in the upper receiver
- Includes the Bolt, Cam Pin, Firing Pin, & Retaining Pin
- Shot Peened
- Enhanced, Detailed Machining
- Rated for full auto



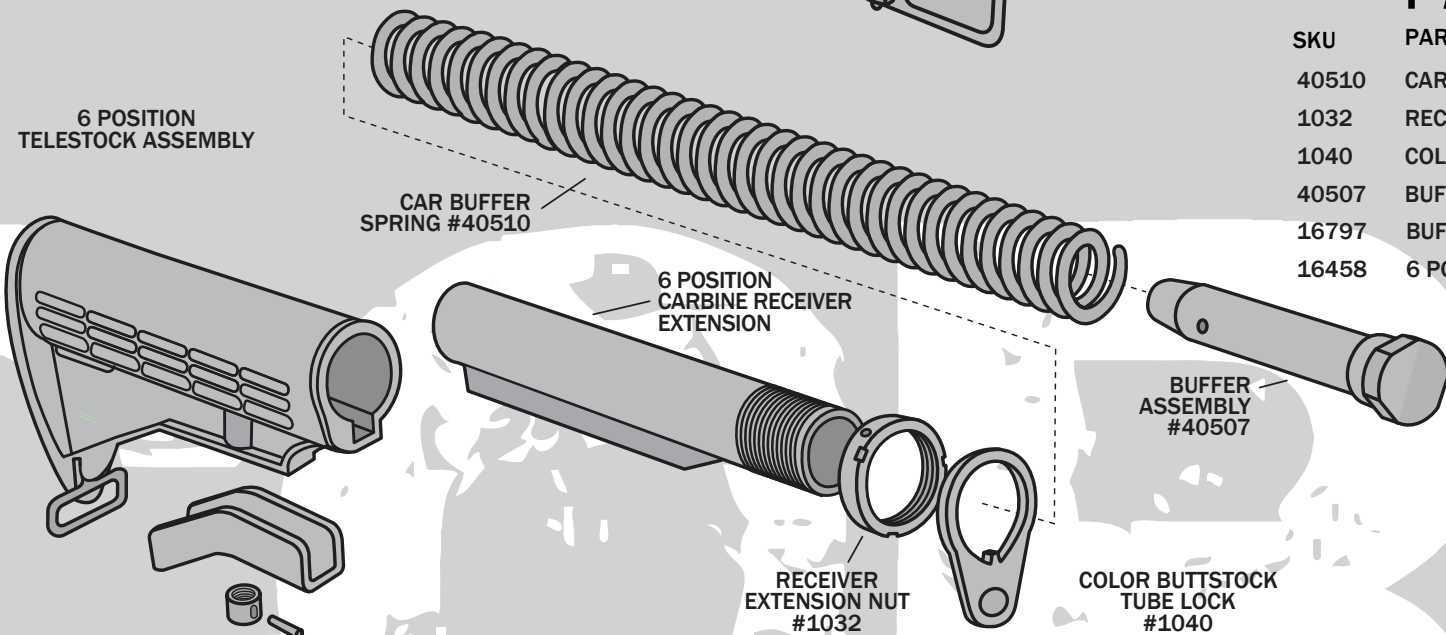


# CORE15® Upper Receiver PARTS LIST



SKU	PART DESCRIPTION	PRICE
99969	UPPER RECEIVER	\$85.00
99483	FORWARD ASSIST COMPLETE	\$9.99
99439	EJECTION PORT COVER ASSY	\$10.99

# CORE15® Buttstock Assembly PARTS LIST



SKU	PART DESCRIPTION	PRICE
40510	CAR BUFFER SPRING	\$6.49
1032	RECEIVER EXTENSION NUT	\$4.19
1040	COLLAR BUTTSTOCK TUBE LOCK	\$3.19
40507	BUFFER ASSEMBLY	\$11.99
16797	BUFFER TUBE MIL-SPEC	\$25.79
16458	6 POS. MIL-SPEC STOCK	\$14.99



SALES, SERVICE, PARTS AND TECHNICAL ASSISTANCE CALL 352-401-9070 OR VISIT [WWW.CORERIFLESYSTEMS.COM](http://WWW.CORERIFLESYSTEMS.COM) TODAY

CORE15® and CORE30® are registered trademarks of CORE Rifle Systems, A Division of Good Time Outdoors, Inc.



# CORE15® Charging Handles

All Hardcore Charging Handles are manufactured from a solid piece of 6061-T6 billet aluminum, allowing it to be held to extremely consistent tolerances and maintain an exceptional level of strength. Hard Coat anodized finish. 100% Mil-spec and will fit and function in any manufacturer's AR-15 Mil-spec upper.

CORE15® V.1 Charging Handle  
MSRP: \$19.99 SKU: #1856



CORE15® V.2 Charging Handle  
MSRP: \$24.99 SKU: #3266



CORE15® V.3 Charging Handle  
MSRP: \$29.99 SKU: #3717



Available Cerakote Colors for all V.1, V.2 AND V.3 Charging Handles Black, FDE and OD Green

**HARDCORE System X**  
MSRP: \$34.99 SKU: #12703



CORE15® Ambidextrous Charging Handle  
MSRP: \$79.99 SKU: #15215



The Oversized Trigger Guard is an upgrade for your standard trigger on your AR-15. It provides more space for shooters with large or gloved hands.



CORE15® Solid Oversized Trigger Guard  
MSRP: \$14.99 SKU: #40515

CORE15® Slotted Oversized Trigger Guard  
MSRP: \$14.99 SKU: #40538

CORE15® 4-Hole Oversized Trigger Guard  
MSRP: \$14.99 SKU: #40537

CORE15® .223 Muzzle Brake  
MSRP: \$89.99 SKU: #15278



CORE15® Low Pro Gas Blocks  
MSRP: \$30.99

Slotted  
SKU: #11796



5 Hole  
SKU: #11735



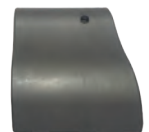
Solid  
SKU: #13911



Angled Grooved  
SKU: #11877



.625 Solid  
SKU: #13912



CORE15® Recoil Management Device  
MSRP: \$59.99 SKU: #16207



CORE15® Close Quarter Breach  
MSRP: \$59.99 SKU: #17750



CORE30® V.3 Charging Handle  
MSRP: \$29.99 SKU: #3715



CORE30® V.2 Charging Handle  
MSRP: \$24.99 SKU: #3728



CORE30® V.1 Charging Handle  
MSRP: \$19.99 SKU: #3729



CORE15® Sling Attachment  
MSRP: \$12.99 SKU: #40539

Picatinny Sling Attachment is the best way to take the weight out of your hands. It simply attaches to your picatinny rail in seconds with the included hardware and will fit any standard picatinny rail.



CORE15® Barrel Nut  
MSRP: \$7.99 SKU: #99446

CORE15® and CORE30® Barrel Nuts are CNC Machined by CORE Rifle Systems from Stressproof® which is made by a patented process which consists of drawing the bar through a special die under heavy draft, then stress relieving it in a precisely controlled furnace.



CORE30® Barrel Nut  
MSRP: \$29.99  
SKU: #100506



- 15" KeyMod System
- Machined from 6005-T6 Aluminum Alloy
- Hard Anodized
- Comes with one (1) KeyMod section



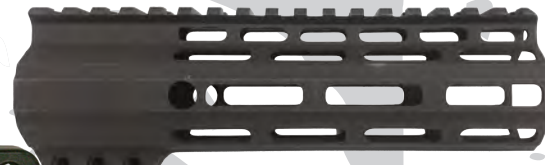
CORE15® 15" M-LOK RAIL  
MSRP: \$99.99 SKU: #22537



CORE15® 13" M-LOK RAIL  
MSRP: \$89.99 SKU: #22612



CORE15® 9" M-LOK RAIL  
MSRP: \$59.99 SKU: #22611



CORE15® 7" M-LOK RAIL  
MSRP: \$49.99 SKU: #22210

CORE15® 12 Section KEYMOD Attachment

MSRP: \$29.99 SKU: #12138



CORE15® 5 Section KEYMOD Attachment

MSRP: \$19.99 SKU: #12137



SALES, SERVICE, PARTS AND TECHNICAL ASSISTANCE CALL 352-401-9070 OR VISIT WWW.CORERIFLESYSTEMS.COM TODAY

CORE15® and CORE30® are registered trademarks of CORE Rifle Systems, A Division of Good Time Outdoors, Inc.



CORE15® Men's Tee's  
SM, MED, LG \$14.95 - XL, 2XL, 3XL \$16.95



CORE15® PVC 3.25 X 2" Patch  
MSRP: \$5.99 SKU: #3953



CORE15® Ripstop Cap  
MSRP: \$15.99  
SKU: #3957



CORE15® Koozie  
MSRP: \$1.99  
SKU: #97074



CORE15® Dog Tags/Key Chain  
MSRP: \$1.25  
SKU: #40468



CORE15® License Plate  
MSRP: \$19.95 SKU: #97058



CORE15® Tan Cap  
MSRP: \$4.99  
SKU: #3495



CORE15® Black Cap  
MSRP: \$4.99  
SKU: #5878





## OTIS **Elite Cleaning System**

**MSRP: \$142.99** SKU: #10791

Whether a hunter, competitive shooter or collector, gun owners understand the importance of taking care of their investment. Having all the right tools in one complete and portable cleaning system at camp, at the range or at home keeps firearms in top condition. Specifically designed for .17 to .50 cal. rifles and pistols, .410 to 12/10 ga. shotguns and all in-line muzzle-loaders.

- Over 40 firearm-specific cleaning components in a nylon case
- Six (6) Memory-Flex® Cables of varying length for effective and correct Breech-to-Muzzle® cleaning
- Twenty-three (23) bronze bore brushes remove copper deposits and other fouling
- Obstruction removal tools for jammed cases and other blockages
- Specialized precision tools for complete breakdown and fine cleaning of all critical and hard to reach areas of your firearm
- Optics cleaning gear for care and maintenance of scopes, range finders and more
- Removable Tactical Cleaning System (Item # FG-750) for convenient carrying in the field
- Dimensions: 15 1/4" x 8 3/4" x 4 1/2"

## OTIS **Reload**

**MSRP: \$8.99** SKU: #10793

The Otis Reload includes two .5oz tubes of Otis O85® Ultra Bore® Solvent, and 50 all-caliber cleaning patches. The Otis O85® Ultra Bore® Solvent is an all-in-one cleaner, lubricant and preservative, and can be used on any firearm finish. The all-caliber cleaning patches can be used on all firearms from .22 caliber to 12/10 gauge, and can be used up to 6 times per patch. They are 100% cotton and provide 360 degrees coverage in the barrel.



## OTIS **Sniper System 5.56/7.62**

**MSRP: \$61.99** SKU: #10789

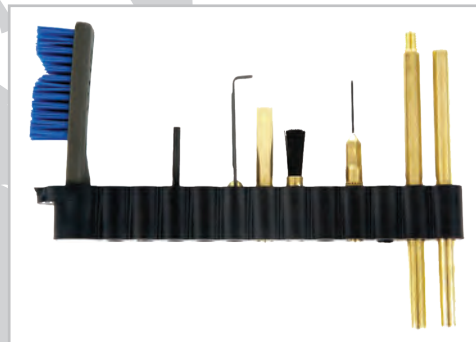
- Designed for .223 cal./5.56MM and .308 cal./7.62MM Firearms.
- 8" and 30" Memory-Flex® Cables for effective and correct Breech-to-Muzzle® cleaning
- Four (4) bronze bore brushes remove copper deposits and other fouling
- Solvent/cleaner helps clean, lubricate and protect the barrel in one efficient step
- Dimensions: 4" x 4" x 2 1/2"



## OTIS **MSR/AR Maintenance Tool Set**

**MSRP: \$12.99** SKU: #10794

The MSR/AR Maintenance Tool Set contains the tools to clean some of the most critical parts of your firearm that would have been nearly impossible to clean before. Included in this set are a scraper, a locking lug scraper, a straight pick, a pin punch, a nylon end brush, a compact receiver brush, and two rod handles. These tools will not scratch the firearm, and with them you can now thoroughly clean areas such as the locking lugs, the slides, bolt face, rails, and any other hard to reach places. These components can be ordered as separate add-ons to all kits, and will fit in existing softpacks!



## OTIS **Ripcord .22/.223/5.56**

**MSRP: \$12.99** SKU: #3956



**SALES, SERVICE, PARTS AND TECHNICAL ASSISTANCE CALL 352-401-9070 OR VISIT [WWW.CORERIFLESYSTEMS.COM](http://WWW.CORERIFLESYSTEMS.COM) TODAY**

CORE15® and CORE30® are registered trademarks of CORE Rifle Systems, A Division of Good Time Outdoors, Inc.





**CORE**<sup>®</sup>  
RIFLE SYSTEMS



4600 W. Highway 326 • Ocala, Florida 34482  
Telephone: +1 352 401 9070 • Website: [www.Core15Rifles.com](http://www.Core15Rifles.com)

For more information about the CORE Rifle Systems family of products, visit your local gun dealer, or visit our website at [www.coreriflesystems.com](http://www.coreriflesystems.com)